

Adattatori

Per oleodinamica

Tipologia	Pagina	Tipologia	Pagina
Nipples gas	5	Vite forata metrica	14
Nipples metrico	5	Vite forata doppia metrica	15
Nipples conico-conico	5	Occhio saldare gas	15
Nipples conico-cilindrico	6	Occhio saldare metrico	15
Nipples gas-npt	6	Occhio filettato metrico/gas	15
Nipples M-F girevole	6	Occhio filettato metrico	16
Nipples ridotto M-F girevole	6	Curva 90° M-F girevole gas	16
Adattatore F-F girevole	7	Curva 90° M-F girevole metrica	16
Adattatore F-F girevole spinato	7	Curva 45° M-F girevole gas	16
Nipples passaparete	7	Curva 45° M-F girevole metrica	16
Prolunga M-M	7	Curva 90° F-F girevole gas	17
Prolunga F-F	8	Curva 90° F-F girevole metrica	17
Nipples ridotto gas	8	Curva 45° F-F girevole gas	17
Nipples ridotto gas-metrico	9	Curva 45° F-F girevole metrica	17
Nipples ridotto metrico	9	Nipples Jic-gas	18
Tappo di riduzione M-F	10	Adattatore "T" M/F/M	18
Prolunga di riduzione M-F	10	Adattatore "T" M/M/F	18
Nipples saldare gas	11	Nipples 90° con-cil	18
Nipples saldare metrico	11	Adattatore 90° M-F gas	19
Borchia saldare	11	Adattatore 90° M-F gas conico	19
Tappo M gas	12	Adattatore 90° F-F fissa	19
Tappo M metrico	12	Adattatore "T" M/M/M gas	19
Tappo F gas	12	Adattatore "T" F/F/F girevole gas	20
Prolunga M-F gas	13	Adattatore "T" F/F/F fissa gas	20
Prolunga M-F metrica	13	Adattatore croce F/F/F/F	20
Borchia saldare gas	13	Semiflange SAE 3000/6000	21
Borchia saldare metrica	14	Flange filettate SAE 3000/6000	22
Vite forata gas	14	Flange saldare SAE 3000/6000	23
Vite forata doppia gas	14		

PRINCIPALI TIPI DI FILETTATURE DEI RACCORDI

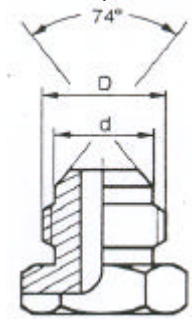
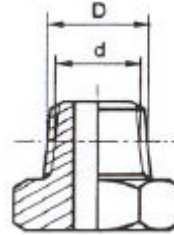
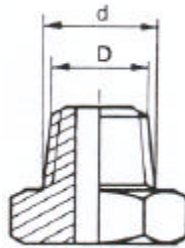
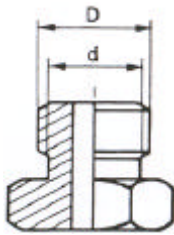
METRICO

GAS CILINDRICO

GAS CONICO

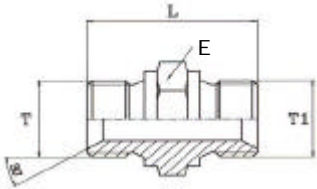
NPT (ASA B2.1)

UNF e UN (ASA B1.1)



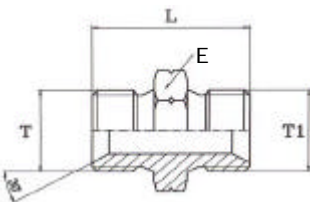
M 8x1	8,00	6,70	G 1/8-28	9,73	8,60	Gc 1/8-28	9,73	8,60	1/8-27	9,98	10,29	7/16 -20UNF	11,07	10,00
M10x1	10,00	8,70	G 1/4-19	13,16	11,50	Gc 1/4-19	13,16	11,50	1/4-18	13,26	13,72	1/2 -20UNF	12,70	11,60
M12x1,5	12,00	10,05	G 3/8-19	16,66	14,90	Gc 3/8-18	16,66	14,90	3/8-18	16,68	17,15	9/16 -18UNF	14,25	13,00
M14x1,5	14,00	12,05	G 1/2-14	20,96	18,60	Gc 1/2-14	20,96	18,60	1/2-14	20,71	21,34	3/4 -16UNF	19,00	17,60
M16x1,5	16,00	14,05	G 5/8-14	22,91	20,60	Gc 3/4-14	26,44	24,10	3/4-14	26,03	26,67	7/8 -14UNF	22,17	20,50
M18x1,5	18,00	16,05	G 3/4-14	26,44	24,10	Gc 1 -11	33,25	30,30	1 1/2-11	32,59	33,40	1 1/16-12UN	26,95	25,00
M22x1,5	22,00	20,05	G 1 -11	33,25	30,30	Gc1 1/4-11	41,91	38,90	1 1/4-11,5	41,31	42,16	1 5/16-12UN	33,30	31,30
M26x1,5	26,00	24,05	G1 1/4-11	41,91	38,90	Gc1 1/2-11	47,80	44,90	1 1/2-11,5	47,39	48,26	1 5/8 -12UN	41,22	39,20
M30x1,5	30,00	28,05	G1 1/2-11	47,80	44,90	Gc 2 -11	59,61	56,70	2 1/2-11	59,40	60,33	1 7/8 -12UN	47,57	45,60
M38x1,5	38,00	36,05	G1 3/4-11	53,75	50,80	Gc2 1/2-11	75,18	72,20	2 1/2-8	71,62	73,03	2 1/2 -12UN	63,45	61,50
M45x1,5	45,00	43,05	G 2 -11	59,61	56,70									
M52x1,5	52,00	50,05	G2 1/4-11	65,72	62,80									
M65x2	65,00	62,40												

NIPPLES DI GIUNZIONE GAS



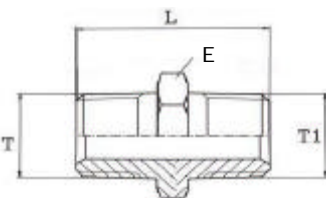
T	T1	L	L1	E	E1	D	d	P max	Codice
1/8	1/8	25,0		14				425	
1/4	1/4	29,0		19				425	
3/8	3/8	34,0		22				400	
1/2	1/2	37,5		27				350	
5/8	5/8	42,0		30				300	
3/4	3/4	42,0		32				250	
1	1	51,0		41				250	
1.1/4	1.1/4	57,0		50				200	
1.1/2	1.1/2	60,0		55				175	
2	2	71,0		70				150	
2.1/2	2.1/2	65,0		85				150	
3	3	65,0		100				100	

NIPPLES DI GIUNZIONE METRICO



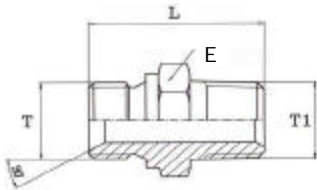
T	T1	L	L1	E	E1	D	d	P max	Codice
M10X1	M10X1	25,0		14				425	
M12X1.5	M12X1.5	29,0		17				425	
M14X1.5	M14X1.5	31,0		19				400	
M16X1.5	M16X1.5	35,0		22				350	
M18X1.5	M18X1.5	36,0		24				350	
M20X1.5	M20X1.5	38,0		27				350	
M22X1.5	M22X1.5	38,0		27				350	
M24X1.5	M24X1.5	36,0		30				250	
M26X1.5	M26X1.5	42,0		32				250	
M30X1,5	M30X1,5	41,0		38				200	

NIPPLES DI GIUNZIONE CONICO-CONICO



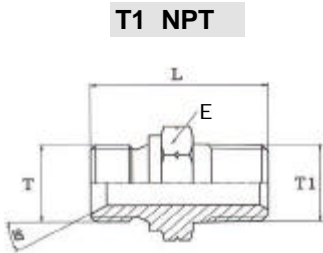
1/8	1/8	25,0		12				350	
1/8	1/4	30,5		14				350	
1/4	1/4	35,0		14				350	
1/4	3/8	35,0		17				250	
3/8	3/8	35,0		17				250	
3/8	1/2	40,5		22				225	
1/2	1/2	45,0		22				225	
1/2	3/4	47,0		27				200	
3/4	3/4	47,0		27				200	
3/4	1	53,0		36				160	
1	1	58,0		36				160	
1.1/4	1.1/4	62,0		46				160	
1.1/2	1.1/2	66,0		50				160	
2	2	69,0		65				100	

NIPPLES DI GIUNZIONE CONICO-CILINDRICO



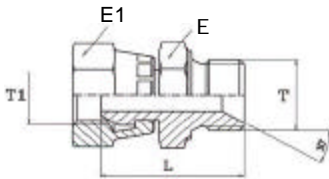
T	T1	L	L1	E	E1	D	d	P max	Codice
1/8	1/8	26,5		12				425	
1/4	1/4	32,0		17				425	
3/8	3/8	35,0		19				400	
3/8	3/8	35,5		22				400	
1/2	1/2	42,5		24				300	
3/4	3/4	46,0		30				250	
1	1	55,0		36				250	
1.1/4	1.1/4	60,0		50				200	
1.1/2	1.1/2	61,5		50				175	
2	2	68,0		65				150	

NIPPLES DI GIUNZIONE GAS-NPT



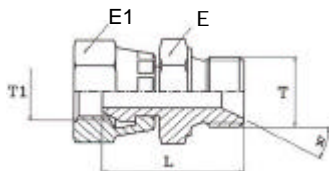
T	T1	L	L1	E	E1	D	d	P max	Codice
1/8-27	1/8-27	27,5		12				425	
1/4	1/4-18	32,0		15				425	
3/8	3/8-18	32,5		17				400	
1/2	1/2	42,5		24				300	
1/2	1/2	44,0		27				300	
3/4	3/4	45,0		27				250	
1	1	55,0		36				200	
1-1/4-11	1.1/4	58,0		45				200	
1.1/2	1.1/2	60,5		50				175	
2	2	68,2		65				150	

ADATTATORE M/F GIREVOLE



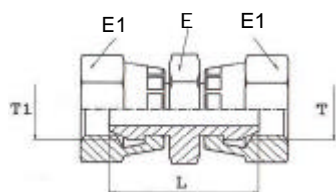
T	T1	L	L1	E	E1	D	d	P max	Codice
1/8	1/8	24,0		14	14			425	
1/4	1/4	29,0		19	19			425	
3/8	3/8	33,5		22	22			400	
1/2	1/2	39,0		27	27			350	
3/4	3/4	44,0		32	32			250	
1	1	45,5		41	38			250	

ADATTATORE RIDOTTO M/F GIREVOLE



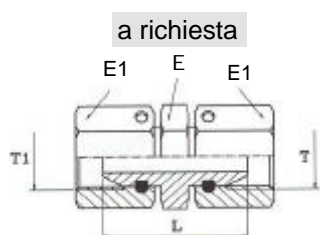
T	T1	L	L1	E	E1	D	d	P max	Codice
1/4	3/8	33,0		19	22			425	
3/8	1/4	33,0		22	19			425	
3/8	1/2	35,5		22	27			400	
1/2	3/8	38,0		27	22			350	
1/2	3/4	42,5		27	32			250	
3/4	1/2	41,0		32	27			250	
3/4	1	45,5		32	38			200	
1	3/4	47,5		41	32			175	

ADATTATORE F/F GIREVOLE



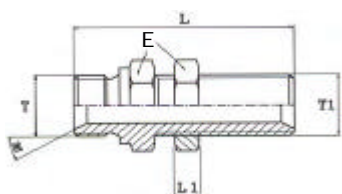
T	T1	L	L1	E	E1	D	d	P max	Codice
1/8	1/8	25,0		14	14			425	
1/4	1/4	27,5		19	19			425	
3/8	3/8	33,0		22	22			400	
1/2	1/2	37,0		27	27			350	
3/4	3/4	43,5		32	32			250	
1	1	42,5		41	38			250	

ADATTATORE F/F GIREVOLE DADO SPINATO



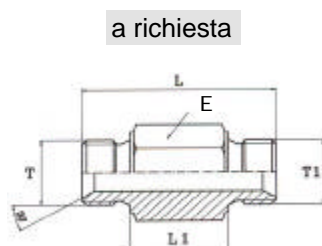
T	T1	L	L1	E	E1	D	d	P max	Codice
1/4	1/4	30,0		19	19			425	
3/8	3/8	33,0		22	22			400	
1/2	1/2	36,0		27	27			350	
3/4	3/4	44,0		32	32			250	
1	1	46,0		38	38			250	
1.1/4	1.1/4	52,0		50	50			200	
1.1/2	1.1/2	57,0		55	55			175	
2	2	54,0		70	70			150	

NIPPLES PASSAPARETE



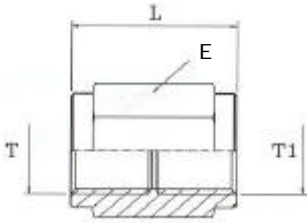
T	T1	L	L1	E	E1	D	d	P max	Codice
1/4	1/4	45	7,0	19				425	
3/8	3/8	54	8,0	22				400	
1/2	1/2	58,5	9,0	27				300	
3/4	3/4	65	10,0	32				250	
1	1	74	11,0	41				200	
1.1/4	1.1/4	79	13,0	50				200	

PROLUNGA M/M



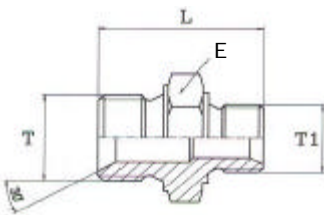
T	T1	L	L1	E	E1	D	d	P max	Codice
1/4	1/4	51	29,0	19				300	
1/4	1/4	57	35,0	19				300	
3/8	3/8	50	25,0	22				250	
3/8	3/8	60	35,0	22				250	
1/2	1/2	56	28,0	27				200	
1/2	1/2	58	30,0	27				200	
3/4	3/4	72	40,0	32				150	
3/4	3/4	77	45,0	32				150	
1	1	85	45,0	41				150	

PROLUNGA F/F GAS



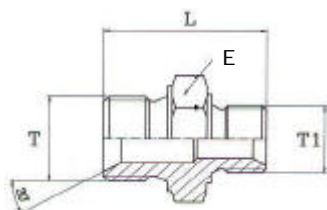
T	T1	L	L1	E	E1	D	d	P max	Codice
1/8	1/8	30,0		14				250	
1/4	1/4	35,0		19				300	
3/8	3/8	40,0		22				300	
1/2	1/2	34,0		27				250	
3/4	3/4	50,0		32				200	
1	1	43,0		41				200	
1.1/4	1.1/4	47,0		50				150	
1.1/2	1.1/2	70,0		55				150	
2	2	57,0		70				150	

NIPPLES DI RIDUZIONE GAS



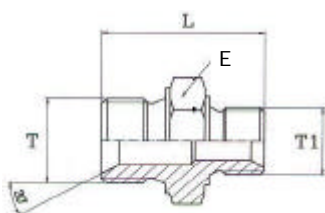
T	T1	L	L1	E	E1	D	d	P max	Codice
1/4	1/8	27,5		19				350	
3/8	1/8	29,5		22				350	
3/8	1/4	32,0		22				350	
1/2	1/4	34,5		27				350	
1/2	3/8	35,5		27				350	
5/8	1/2	40,0		30				300	
3/4	1/4	38,0		32				250	
3/4	3/8	38,0		32				250	
3/4	1/2	40,0		32				250	
3/4	5/8	43,0		32				250	
1	3/8	44,5		41				200	
1	1/2	47,0		41				200	
1	3/4	49,0		41				200	
1.1/4	1/2	51,0		50				200	
1.1/4	3/4	53,0		50				200	
1.1/4	1	55,0		50				200	
1.1/2	3/4	54,0		55				175	
1.1/2	1	56,0		55				175	
1.1/2	1.1/4	58,0		55				175	
2	1.1/4	65,5		70				150	
2	1.1/2	67,5		70				150	

NIPPLES DI RIDUZIONE GAS-METRICO



T	T1	L	L1	E	E1	D	d	P max	Codice
1/4	M10X1	28,0		19				425	
1/4	M12X1.5	29,0		19				425	
1/4	M14X1.5	30,0		19				425	
1/4	M16X1.5	33,0		22				300	
1/4	M18X1.5	33,0		24				300	
3/8	M14X1.5	33,0		22				300	
3/8	M16X1.5	35,0		22				300	
3/8	M18X1.5	35,0		24				300	
3/8	M22X1.5	36,5		27				250	
1/2	M14X1.5	35,5		27				250	
1/2	M16X1.5	37,5		27				250	
1/2	M18X1.5	36,5		27				250	
1/2	M22X1.5	38,0		27				250	
3/4	M18X1.5	42,0		32				200	
3/4	M22X1.5	42,0		32				200	
3/4	M26X1.5	43,0		32				200	
1	M26X1.5	42,5		41				200	

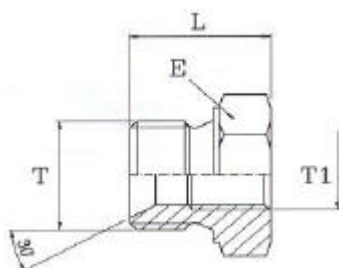
NIPPLES DI RIDUZIONE METRICO-METRICO



T	T1	L	L1	E	E1	D	d	P max	Codice
M14X1.5	M10X1	28,5		19				350	
M14X1.5	M12X1.5	30,0		19				350	
M16X1.5	M12X1.5	31,0		22				350	
M16X1.5	M14X1.5	31,0		22				350	
M18X1.5	M14X1.5	34,0		24				350	
M18X1.5	M16X1.5	36,0		24				350	
M22X1.5	M16X1.5	37,0		27				350	
M22X1.5	M18X1.5	37,5		27				250	
M26X1.5	M22X1.5	38,0		32				200	

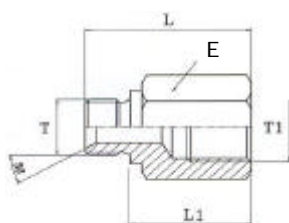
TAPPO DI RIDUZIONE M/F

T	T1	L	L1	E	E1	D	d	P max	Codice
1/4	1/8	18,0		19				175	
3/8	1/8	21,0		22				175	
3/8	1/4	21,0		22				175	
1/2	1/4	23,5		27				175	
1/2	3/8	23,5		27				175	
3/4	3/8	27,0		32				175	
3/4	1/2	27,0		32				175	
1	3/8	30,0		41				150	
1	1/2	30,0		41				150	
1	3/4	30,0		41				150	
1.1/4	1/2	33,5		50				125	
1.1/4	3/4	33,5		50				125	
1.1/4	1	33,5		50				125	
1.1/2	3/4	35,5		55				125	
1.1/2	1	35,5		55				125	
1.1/2	1.1/4	35,5		55				125	
2	1.1/4	42,5		70				100	
2	1.1/2	42,5		70				100	

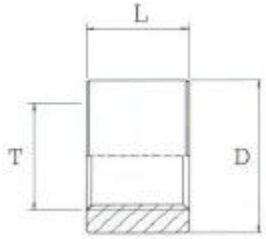


PROLUNGA DI RIDUZIONE M/F

T	T1	L	L1	E	E1	D	d	P max	Codice
1/8	1/4	29	19,5	19				300	
1/4	1/8	30	19,5	19				300	
1/4	3/8	33	22	22				300	
1/4	1/2	37	26	27				300	
3/8	1/4	35	22	22				250	
3/8	1/2	39	26	27				250	
1/2	1/4	36	22	27				200	
1/2	3/8	36	22	27				200	
1/2	3/4	42	29	32				200	
1/2	1	45	31	41				200	
3/4	1/4	40	23	32				200	
3/4	3/8	40	23	32				200	
3/4	1/2	43	26	32				200	
3/4	1	50	33	41				200	
3/4	1.1/4	48	32	50				200	
1	3/4	50	31	41				200	
1	1.1/4	51	32	50				200	
1	1.1/2	52	32	55				200	
1.1/4	3/4	53,5	32	50				150	
1.1/4	1	53,5	32	50				150	
1.1/4	1.1/2	53,5	32	55				150	
1.1/2	1	55	33	55				150	
1.1/2	1.1/4	55	33	55				150	
1.1/2	2	65	43	70				150	
2	1.1/4	68	43	70				150	
2	1.1/2	68	43	70				150	

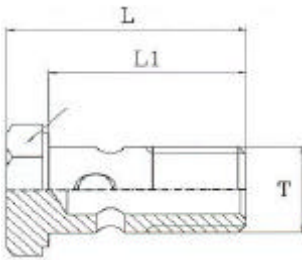


BORCHIA A SALDARE METRICA



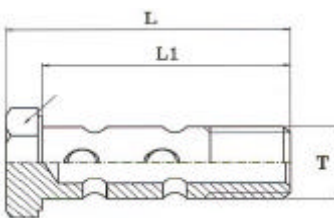
T	T1	L	L1	E	E1	D	d	P max	Codice
10X1		14,0				20		425	U1550110140
12X1,5		16,0				22		425	U1550112160
14X1,5		16,0				22		425	U1550114160
16X1,5		17,0				26		400	U1550116170
18X1,5		18,0				28		400	U1550118180
20X1,5		18,0				30		300	U1550120180
22X1,5		18,0				32		300	U1550122181
24X1,5		20,0				36		250	U1550124190
26X1,5		20,0				38		250	U1550126200

VITE FORATA GAS



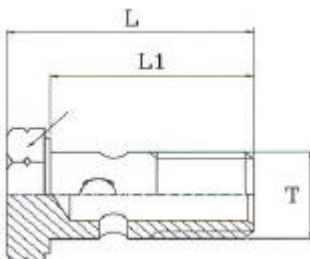
T	T1	L	L1	E	E1	D	d	P max	Codice
1/8		24,0	19,5	14				300	U1555010000
1/4		34,5	28,5	19				300	U1555013312
3/8		40,5	33,0	22				300	U1555017400
1/2		46,0	38,0	27				250	U1555021460
5/8		50,0	42,0	30				200	U1555023500
3/4		56,0	47,0	32				200	U1555027690
1		69,0	58,0	41				150	U1555033860

VITE FORATA DOPPIA GAS



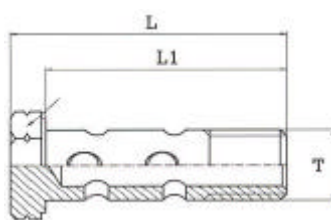
T	T1	L	L1	E	E1	D	d	P max	Codice
1/8		36,5	30,5	14				200	U1558110000
1/4		49,0	43,0	19				200	U1558113000
3/8		57,0	49,5	22				200	U1558117000
1/2		72,0	63,0	27				200	U1558121000
3/4		86,5	77,5	32				150	U1558127000
1		108,5	97,5	41				150	U1558133000

VITE FORATA METRICA



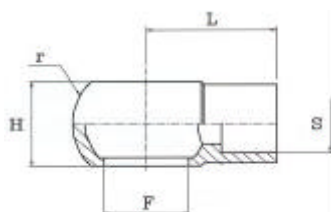
T	T1	L	L1	E	E1	D	d	P max	Codice
M10X1		24,0	19,5	14				300	U1555110250
M12X1.5		31,5	25,5	17				300	U1555112312
M14X1.5		34,0	28,5	19				300	U1555114330
M16X1.5		40,5	33,0	22				300	U1555116400
M18X1.5		44,5	36,5	24				250	U1555118440
M22X1.5		46,5	38,5	27				200	U1555122460
M26X1.5		56,0	45,5	32				200	U1555126560

VITE FORATA DOPPIA METRICA



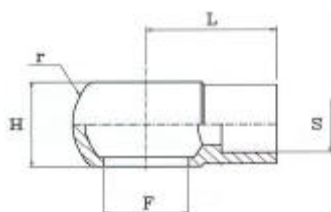
T	T1	L	L1	E	E1	D	d	P _{max}	Codice
M10X1		36,5	30,5	14				200	U1558010000
M12X1,5		48,0	42,0	17				200	U1558012000
M14X1,5		49,0	43,0	19				200	U1558014000
M16X1,5		56,0	49,0	22				200	U1558016000
M18X1,5		65,0	54,0	24				200	U1558018000
M22X1,5		72,0	64,0	27				200	U1558022000

OCCHIO SALDARE GAS



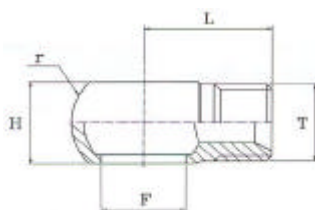
T	T1	L	L1	E	E1	D	d	P _{max}	Codice
1/4	6	24,0	14		24			300	U1560013060
1/4	8	24,0	14		24			300	U1560013080
1/4	10	24,0	14		24			300	U1560013100
3/8	10	28,0	18		28			300	U1560017100
3/8	12	28,0	18		28			300	U1560017120
1/2	15	32,0	22		35			250	U1560021150
1/2	16	32,0	22		35			250	U1560021160
3/4	20	40,0	29		45			200	U1560027200
1	27	57,0	37		58			150	U1560033270

OCCHIO SALDARE METRICO



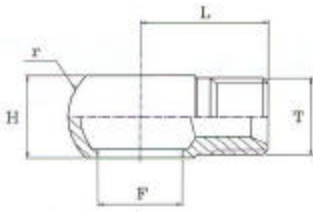
T	T1	L	L1	E	E1	D	d	P _{max}	Codice
14	10	24,0	14		24			300	U1560114100
16	12	28,0	18		28			300	U1560116120
18	12	29,0	20		32			250	U1560120120
18	15	29,0	20		32			250	U1560120150
22	16	32,0	22		35			250	U1560122160
26	20	40,0	29		45			150	U1560128200

OCCHIO FILETTATO GAS GAS/METRICO



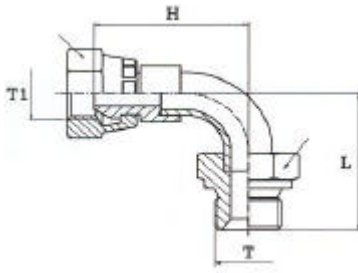
T	T1	L	L1	E	E1	D	d	P _{max}	Codice
1/4	1/4	25,0	14		24			250	U1564013130
1/4	M14X1.5	25,0	14		24			250	U1564214140
3/8	1/4	25,0	18		28			250	U1564017130
3/8	3/8	28,0	18		28			250	U1564017170
3/8	M18X1.5	28,0	18		28			250	U1564217180
1/2	3/8	28,0	22		35			250	U1564021170
1/2	1/2	28,0	22		35			250	U1564021210
3/4	3/4	40,0	29		45			200	U1564027270
1	1	44,0	37		60			150	U1564033330

OCCHIO FILETTATO METRICO



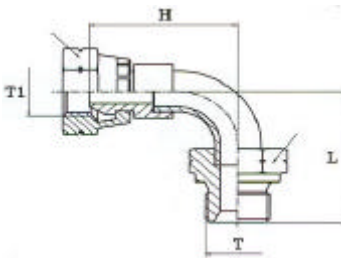
T	T1	L	L1	E	E1	D	d	P max	Codice
14	M14X1.5	24,0	15		24			300	U1564114140
18	M18X1.5	30,0	20		32			250	U1564118180
22	M22X1.5	35,0	23		35			200	U1564122220

CURVA 90° M/F GIREVOLE GAS



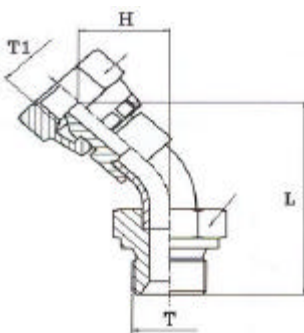
T	T1	L	L1	E	E1	D	d	P max	Codice
1/8	1/8	29,5	29,7	14	14			350	U1580001010
1/4	1/4	32,0	30,8	19	19			350	U1580001313
3/8	3/8	37,0	38,5	22	22			300	U1580001717
1/2	1/2	42,5	45,5	27	27			250	U1580002121
3/4	3/4	58,0	55,8	32	32			200	U1580002727
1	1	70,0	65,2	41	38			200	U1580003333
1.1/4	1.1/4	78,5	74,5	50	50			175	U1580014242
1.1/2	1.1/2	93,0	89,1	55	55			150	U1580014848
2	2	121,0	112,9	70	70			150	U1580015151

CURVA 90° M/F GIREVOLE METRICO



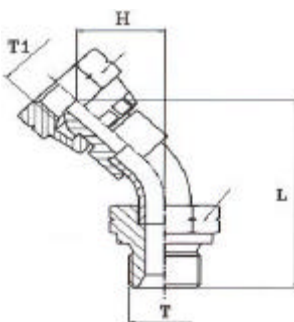
T	T1	L	L1	E	E1	D	d	P max	Codice
M14X1,5	M14X1,5	32,0	30,8	19	19			350	U1580101414
M16X1,5	M16X1,5	37,0	38,5	22	22			300	U1580101616
M18X1,5	M18X1,5	37,0	38,5	24	24			300	U1580101818
M22X1,5	M22X1,5	42,5	45,5	27	27			250	U1580102222
M26X1,5	M26X1,5	58,0	55,8	32	32			200	U1580102626

CURVA 45° M/F GIREVOLE GAS



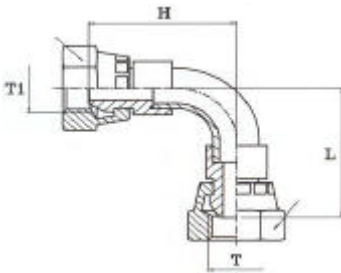
T	T1	L	L1	E	E1	D	d	P max	Codice
1/4	1/4	44,1	17,1	19	19			350	U1582001313
3/8	3/8	52,0	21,0	22	22			350	U1582001717
1/2	1/2	53,3	23,8	27	27			300	U1582002121
3/4	3/4	66,4	25,9	32	32			250	U1582002727
1	1	85,9	33,9	38	38			200	U1582003333
1.1/4	1.1/4	81,3	31,8	50	50			200	U1582014242
1.1/2	1.1/2	101,9	39,9	55	55			175	U1582014848
2	2	132,2	52,2	70	70			150	U1582015151

CURVA 45° M/F GIREVOLE METRICO



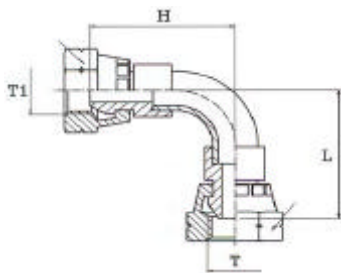
T	T1	L	L1	E	E1	D	d	P max	Codice
M14X1,5	M14X1,5	44,1	17,1	19	19			350	U1582001414
M16X1,5	M16X1,5	52,0	21,0	22	22			300	U1582001616
M18X1,5	M18X1,5	52,0	21,0	24	24			300	U1582001818
M22X1,5	M22X1,5	53,3	23,8	27	27			250	U1582002222
M26X1,5	M26X1,5	66,4	25,9	32	32			200	U1582002626

CURVA 90° F/F GIREVOLE GAS



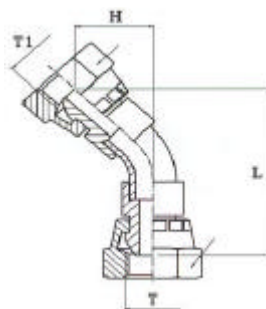
T	T1	L	L1	E	E1	D	d	P _{max}	Codice
1/4	1/4	30,8	30,8	19	19			350	U1581001313
3/8	3/8	38,5	38,5	22	22			300	U1581001717
1/2	1/2	45,5	45,5	27	27			250	U1581002121
3/4	3/4	55,8	55,8	32	32			200	U1581002727
1	1	65,2	65,2	38	38			200	U1581003333
1.1/4	1.1/4	74,5	74,5	50	50			175	U1581014242
1.1/2	1.1/2	89,1	89,1	55	55			150	U1581014848
2	2	112,9	112,9	70	70			150	U1581015151

CURVA 90° F/F GIREVOLE METRICO



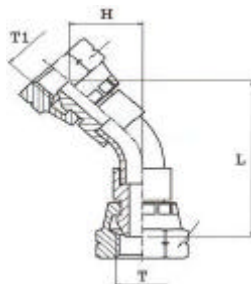
T	T1	L	L1	E	E1	D	d	P _{max}	Codice
M14X1,5	M14X1,5	30,8	30,8	19	19			350	U1581101414
M16X1,5	M16X1,5	38,5	38,5	22	22			300	U1581101616
M18X1,5	M18X1,5	38,5	38,5	24	24			300	U1581101818
M22X1,5	M22X1,5	45,5	45,5	27	27			250	U1581102222
M26X1,5	M26X1,5	55,8	55,8	32	32			200	U1581102626

CURVA 45° F/F GIREVOLE GAS



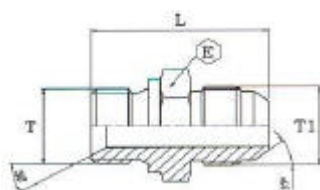
T	T1	L	L1	E	E1	D	d	P _{max}	Codice
1/4	1/4	42,9	17,1	19	19			350	U1583001313
3/8	3/8	53,5	21,0	22	22			300	U1583001717
1/2	1/2	56,3	23,8	27	27			250	U1583002121
3/4	3/4	64,2	25,9	32	32			200	U1583002727
1	1	81,1	33,9	38	38			200	U1583003333
1.1/4	1.1/4	77,3	31,8	50	50			175	U1583014242
1.1/2	1.1/2	98,0	39,9	55	55			150	U1583014848
2	2	124,1	52,2	70	70			150	U1583015151

CURVA 45° F/F GIREVOLE METRICO



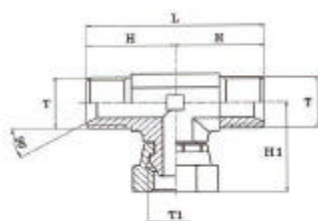
T	T1	L	L1	E	E1	D	d	P _{max}	Codice
M14X1,5	M14X1,5	42,9	17,1	19	19			350	U1583101414
M16X1,5	M16X1,5	53,5	21,0	22	22			300	U1583101616
M18X1,5	M18X1,5	53,5	21,0	24	24			300	U1583101818
M22X1,5	M22X1,5	56,3	23,8	27	27			250	U1583102222
M26X1,5	M26X1,5	64,2	25,9	32	32			200	U1583102626

NIPPLES DI GIUNZIONE GAS-JIC



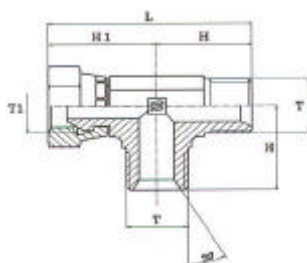
T	T1	L	L1	E	E1	D	d	P _{max}	Codice
1/4	7/16	34,0		19				380	U1512413110
1/4	9/16	34,0		19				380	U1512413140
3/8	3/4	38,2		22				340	U1512417190
1/2	3/4	41,7		27				340	U1512421190
1/2	7/8	44,3		27				340	U1512421220
5/8	1.1/16	48,4		28				280	U1512423270
3/4	1.1/16	50,0		32				280	U1512427270
1	1.5/16	53,1		41				190	U1512433330
1.1/4	1.5/8	58,3		50				180	U1512442410

ADATTATORE A "T" M/F/M GAS GIREVOLE



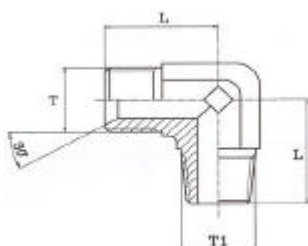
T	T1	L	L1	E	E1	D	d	P _{max}	Codice
1/4	1/4	54,0	27,0	19			29,0	380	220S960131313
3/8	3/8	63,0	32,0	22			34,0	380	220S960171717
1/2	1/2	74,0	37,0	27			40,0	340	220S960212121
3/4	3/4	80,0	40,0	32			46,0	280	220S960272727
1	1	100,0	50,0	38			52,0	190	220S960333333
1.1/4	1.1/4	104,0	52,0	50			57,0	190	220S960424242
1.1/2	1.1/2	120,0	60,0	55			61,0	180	220S960484848

ADATTATORE A "T" M/M/F GAS GIREVOLE



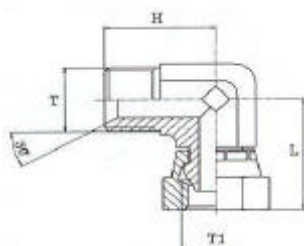
T	T1	L	L1	E	E1	D	d	P _{max}	Codice
1/4	1/4	58,0	27,0	19			31,0	380	220S955131313
3/8	3/8	66,0	32,0	22			34,0	380	220S955171717
1/2	1/2	77,0	37,0	27			40,0	340	220S955212121
3/4	3/4	86,0	40,0	32			46,0	280	220S955272727
1	1	102,0	50,0	38			52,0	190	220S955333333
1.1/4	1.1/4	109,0	52,0	50			57,0	190	220S955424242
1.1/2	1.1/2	120,0	59,0	55			61,0	180	220S955484848

ADATTATORE A 90° M/M GAS CONICO



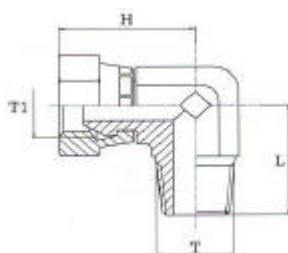
T	T1	L	L1	E	E1	D	d	P _{max}	Codice
1/8	1/8	20,0		12				380	U1902001010
1/4	1/4	27,0		15				380	U1902001313
3/8	3/8	30,0		20				380	U1902001717
1/2	1/2	37,0		24				340	U1902002121
3/4	3/4	40,0		30				280	U1902002626
1	1	50,0		35				190	U1902003333
1.1/4	1.1/4	52,0		45				190	U1902004242
1.1/2	1.1/2	59,0		50				180	U1902004848

ADATTATORE A 90° M/F GAS GIREVOLE



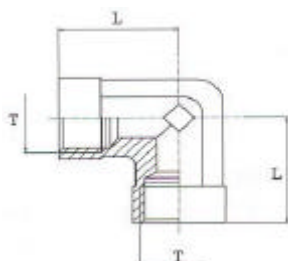
T	T1	L	L1	E	E1	D	d	P max	Codice
1/4	1/4	29,0	27,0	19				380	220S9501313
3/8	3/8	34,0	32,0	22				380	220S9501717
1/2	1/2	40,0	37,0	27				340	220S9502121
3/4	3/4	46,0	40,0	32				280	220S9502727
1	1	52,0	50,0	38				190	220S9503333
1.1/4	1.1/4	57,0	52,0	50				190	220S9504242
1.1/2	1.1/2	64,0	59,0	55				190	220S9504848

ADATTATORE A 90° M CONICO-FEMMINA GAS GIREVOLE



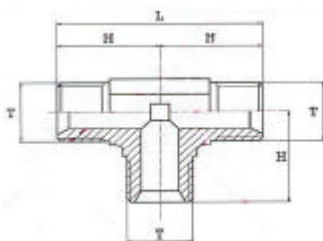
T	T1	L	L1	E	E1	D	d	P max	Codice
1/4	1/4	29,0	27,0	19				300	220S9801313
3/8	3/8	34,0	32,0	22				300	220S9801717
1/2	1/2	40,0	36,0	27				250	220S9802121
3/4	3/4	46,0	40,0	32				200	220S9802727
1	1	52,0	50,0	38				175	220S9803333
1.1/4	1.1/4	57,0	52,0	50				150	220S9804242
1.1/2	1.1/2	64,0	59,0	55				100	220S9804848

ADATTATORE A 90° F-F FISSA GAS



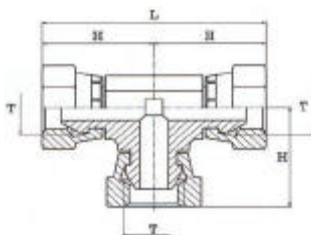
T	T1	L	L1	E	E1	D	d	P max	Codice
1/8		17,0		12				380	U1928001010
1/4		22,0		15				380	U1928001313
3/8		26,0		20				380	U1928001717
1/2		31,0		24				340	U1928002121
3/4		35,0		30				280	U1928002727
1		44,0		35				190	U1928003333
1.1/4		52,0		41				190	U1928004242

ADATTATORE A "T" M/M/M GAS



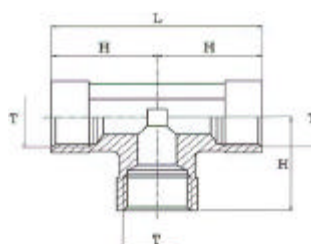
T	T1	L	L1	E	E1	D	d	P max	Codice
1/8		44,0	22,0	12				300	U19321101010
1/4		54,0	27,0	14				300	U1932131313
3/8		58,0	29,0	19				300	U1932171717
1/2		70,0	35,0	22				250	U1932212121
3/4		86,0	43,0	27				200	U1932272727
1		100,0	50,0	33				180	U1932333333
1.1/4		110,0	55,0	41				150	U1932424242

ADATTATORE A "T" F/F/F GAS GIREVOLI



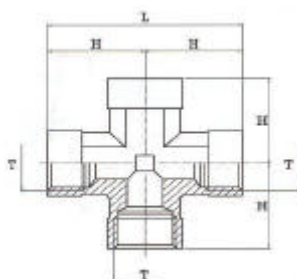
T	T1	L	L1	E	E1	D	d	P _{max}	Codice
1/4		58,0	29,0	19				380	220S94413
3/8		68,0	34,0	22				380	220S94417
1/2		80,0	40,0	27				340	220S94421
3/4		91,0	46,0	32				280	220S94427
1		104,0	52,0	38				190	220S94433

ADATTATORE A "T" F/F/F GAS FISSA



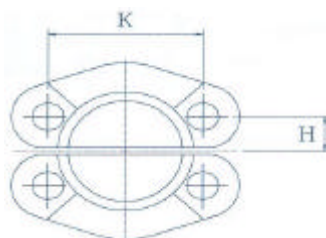
T	T1	L	L1	E	E1	D	d	P _{max}	Codice
1/8		34,0	17,0	12				380	U1946101010
1/4		44,0	22,0	14				380	U1946131313
3/8		52,0	26,0	19				380	U1946171717
1/2		62,0	31,0	22				340	U1946212121
3/4		70,0	35,0	27				280	U1946272727
1		88,0	44,0	33				190	U1946333333
1.1/4		100,0	50,0	41				190	U1946424242

ADATTATORE A "CROCE" F/F/F/F GAS FISSA



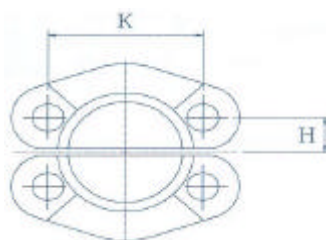
T	T1	L	L1	E	E1	D	d	P _{max}	Codice
1/8		34,0	17,0	12				380	U1956000010
1/4		44,0	22,0	14				380	U1956000013
3/8		52,0	26,0	19				380	U1956000017
1/2		62,0	31,0	22				340	U1956000021
3/4		70,0	35,0	27				280	U1956000027

SEMIFLANGE TAGLIATE 3000 psi (210bar)



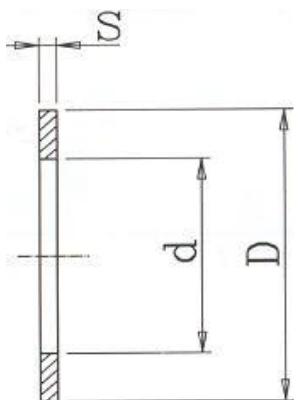
Flangia	Ø Flang.	K	H						Codice
1/2"	30,2	38,10	8,74						627SF3001
3/4"	38,1	47,63	11,13						627SF3002
1"	44,5	52,37	13,08						627SF3003
1.1/4"	50,8	58,72	15,09						627SF3004
1.1/2"	60,4	69,85	17,86						627SF3005
2"	71,5	77,77	21,44						627SF3006
2.1/2"	84,1	88,90	25,40						627SF3007
3"	101,6	106,38	30,96						627SF3008
3.1/2"	114,3	120,65	34,92						627SF3009
4"	127,0	130,18	38,88						627SF3010

SEMIFLANGE TAGLIATE 6000 psi (420bar)

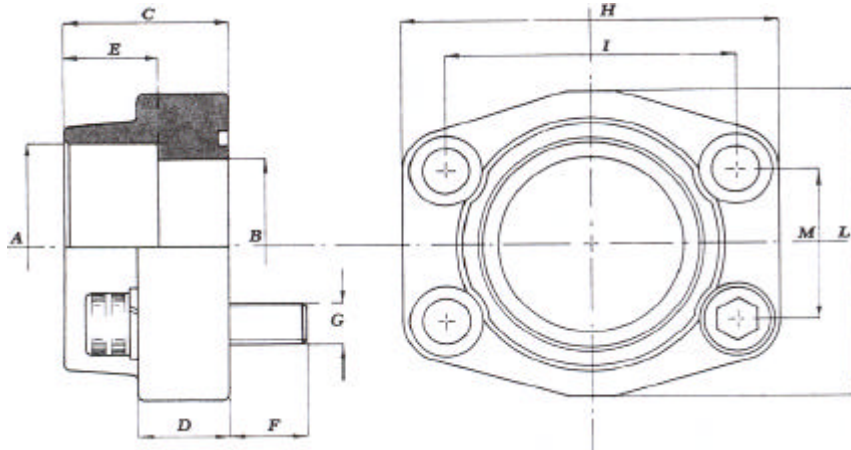


Flangia	Ø Flang.	K	H						Codice
1/2"	31,8	40,49	9,12						627SF6001
3/4"	41,3	50,80	11,91						627SF6002
1"	47,6	57,15	13,89						627SF6003
1.1/4"	54,0	66,68	15,88						627SF6004
1.1/2"	63,5	79,38	18,26						627SF6005
2"	79,4	96,82	22,23						627SF6006

RONDELLA RAME METRICA-GAS



d	D	S						Codice
10,0	14,0	1,5						U3521501014
10,0	16,0	1,5			1/8"			U3521501016
12,0	18,0	1,5						U3521501218
13,5	19,0	1,5			1/4"			U3521501319
14,0	20,0	1,5						U3521501420
16,0	22,0	1,5						U3521501622
17,0	22,0	1,5			3/8"			U3521501722
18,0	24,0	1,5						U3521501824
20,0	26,0	1,5						U3521502026
21,5	27,0	1,5			1/2"			U3521502127
22,0	28,0	1,5						U3521502228
24,0	30,0	1,5			5/8"			U3521502430
26,0	32,0	1,5						U3521502632
27,0	33,0	1,5			3/4"			U3521502733
28,0	34,0	1,5						U3521502834
30,0	36,0	1,5						U3521503036
33,5	40,0	1,5			1"			U3521503341
42,0	50,0	1,5			1.1/4"			U3521504250
48,0	56,0	1,5			1.1/2"			U3521504856
60,0	72,0	1,5			2"			U3521506072

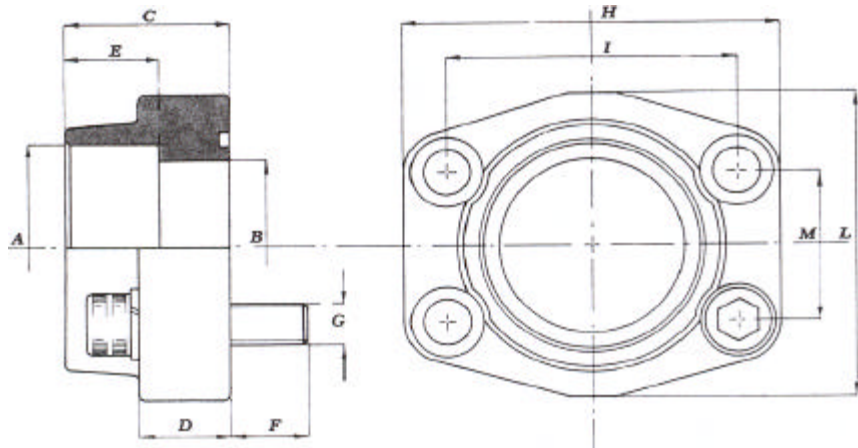


FLANGE FILETTATE 3000 psi (210bar)

P max (bar)	Codice	SAE 3000	Filetto A	B	C	D	E	F	G		H	I	L	M	OR
									Met.	UNC					
348	627CFS0801G	1/2	3/8	14	36	16	13	14	M 8	5/16	57	38,0	47	17,5	4075
348	627CFS0800G	1/2	1/2	14	36	16	15	14	M 8	5/16	57	38,0	47	17,5	4075
348	627CFS1001G	3/4	1/2	14	36	18	15	16	M10	3/8	66	47,6	49	22,2	4100
348	627CFS1000G	3/4	3/4	19	36	18	18	16	M10	3/8	66	47,6	49	22,2	4100
348	627CFS1021G	1	3/4	19	36	21	18	16	M10	3/8	71	52,4	53	26,2	4131
348	627CFS1020G	1	1	25	38	18	20	16	M10	3/8	71	52,4	53	26,2	4131
278	627CFS1041G	1 1/4	1	25	41	25	20	16	M10	3/8	80	58,7	69	30,2	4150
278	627CFS1040G	1 1/4	1 1/4	31	41	21	22	18	M10	3/8	80	58,7	69	30,2	4150
210	627CFS1061G	1 1/2	1 1/4	31	44	27	22	18	M12	1/2	94	70,0	77	35,7	4187
210	627CFS1060G	1 1/2	1 1/2	38	44	25	24	18	M12	1/2	94	70,0	77	35,7	4187
210	627CFS1081G	2	1 1/2	38	44	25	24	18	M12	1/2	103	77,8	89	42,9	4225
210	627CFS1080G	2	2	50	45	25	26	18	M12	1/2	103	77,8	89	42,9	4225
175	627CFS1101G	2 1/2	2	50	50	25	26	18	M12	1/2	115	89,0	101	50,8	4275
175	627CFS1100G	2 1/2	2 1/2	63	50	25	30	18	M12	1/2	115	89,0	101	50,8	4275
138	627CFS1121G	3	2 1/2	63	50	27	30	25	M16	5/8	135	106,4	124	62,0	4337
138	627CFS1120G	3	3	73	50	27	30	25	M16	5/8	135	106,4	124	62,0	4337
35	627CFS1141G	3 1/2	3	73	50	27	30	25	M16	5/8	152	120,7	136	70,0	4387
35	627CFS1140G	3 1/2	3 1/2	89	50	27	30	25	M16	5/8	152	120,7	136	70,0	4387
35	627CFS1161G	4	3 1/2	89	50	27	30	25	M16	5/8	162	130,0	146	77,8	4437
35	627CFS1160G	4	4	99	50	27	30	25	M16	5/8	162	130,0	146	77,8	4437
35	627CFS1180G	5	5	120	50	28	30	25	M16	5/8	184	152,4	180	92,0	4537

FLANGE FILETTATE 6000 psi (420bar)

P max (bar)	Codice	SAE 6000	Filetto A	B	C	D	E	F	G		H	I	L	M	OR
									Met.	UNC					
420	627CFS0400G	1/2	3/8	14	36	16	13	14	M 8	5/16	57	40,5	47	18,3	4075
420	627CFS0401G	1/2	1/2	14	36	16	15	14	M 8	5/16	57	40,5	47	18,3	4075
420	627CFS0401G1	3/4	1/2	14	36	19	18	16	M10	3/8	71	50,8	53	23,8	4100
420	627CFS0402G	3/4	3/4	19	36	19	18	16	M10	3/8	71	50,8	53	23,8	4100
420	627CFS0402G1	1	3/4	19	44	24	20	19	M12	7/16	80	57,1	69	27,8	4131
420	627CFS0403G	1	1	25	44	24	20	19	M12	7/16	80	57,1	69	27,8	4131
420	627CFS0403G1	1 1/4	1	25	44	27	22	22	M14	1/2	94	66,7	77	31,6	4150
420	627CFS0404G	1 1/4	1 1/4	31	44	27	22	22	M14	1/2	94	66,7	77	31,6	4150
420	627CFS0404G1	1 1/2	1 1/4	31	51	30	24	24	M16	5/8	106	79,4	89	36,7	4187
420	627CFS0405G	1 1/2	1 1/2	38	51	30	24	24	M16	5/8	106	79,4	89	36,7	4187
420	627CFS0405G1	2	1 1/2	38	58	37	33	32	M20	3/4	135	96,8	116	44,4	4225
420	627CFS0406G	2	2	50	58	37	33	32	M20	3/4	135	96,8	116	44,4	4225
420	627CFS0408G	2 1/2	2 1/2	63	75	45	35	35	M24	-	166	123,8	150	58,7	4275
420	627CFS0410G	3	3	73	90	55	40	55	M30	-	208	152,4	178	71,4	4337



FLANGE SALDARE 3000 psi (210bar)

P max (bar)	Codice	SAE 3000	A	B	C	D	E	F	G		H	I	L	M	OR
									Met.	UNC					
348	627CFS080S	3/8	17,5	14	36	16	18	14	M 8	5/16	57	38,0	47	17,5	4075
348	627CFS081S	1/2	21,6	14	36	16	18	14	M 8	5/16	57	38,0	47	17,5	4075
348	627CFS100S	3/4	27,2	19	36	18	18	16	M10	3/8	66	47,6	49	22,2	4100
348	627CFS102S	1	34,0	25	38	18	18	16	M10	3/8	70	52,4	53	26,2	4131
278	627CFS104S	1 1/4	42,8	31	41	21	20	18	M10	7/16	80	58,7	69	30,2	4150
210	627CFS106S	1 1/2	48,6	38	44	25	22	18	M12	1/2	94	70,0	77	35,7	4187
210	627CFS108S	2	61,0	50	45	25	24	18	M12	1/2	103	77,8	89	42,9	4225
175	627CFS110S	2 1/2	76,6	63	50	25	28	18	M12	1/2	115	89,0	101	50,8	4275
138	627CFS112S	3	90,5	73	50	27	28	25	M16	5/8	135	106,4	124	62,0	4337
35	627CFS114S	3 1/2	103,0	89	50	27	28	25	M16	5/8	153	120,7	137	70,0	4387
35	627CFS116S	4	115,5	99	50	27	28	25	M16	5/8	163	130,0	147	77,8	4437
35	627CFS118S	5	142,0	120	50	28	28	25	M16	5/8	184	152,4	180	92,0	4537

FLANGE SALDARE 6000 psi (420bar)

P max (bar)	Codice	SAE 6000	A	B	C	D	E	F	G		H	I	L	M	OR
									Met.	UNC					
420	627CFS400S	3/8	17,5	14	36	16	18	14	M 8	5/16	57	40,5	47	18,3	4075
420	627CFS401S	1/2	21,6	14	36	16	18	14	M 8	5/16	57	40,5	47	18,3	4075
420	627CFS402S	3/4	27,2	19	36	19	20	16	M10	3/8	71	50,8	53	23,8	4100
420	627CFS403S	1	34,0	25	44	24	22	19	M12	7/16	80	57,1	66	27,8	4131
420	627CFS404S	1 1/4	42,8	31	44	27	22	22	M14	1/2	94	66,7	77	31,6	4150
420	627CFS405S	1 1/2	48,6	38	51	30	24	24	M16	5/8	106	79,4	89	36,7	4187
420	627CFS406S	2	61,0	50	58	37	25	32	M20	3/4	135	96,8	116	44,4	4225
420	627CFS408S	2 1/2	76,6	63	75	45	28	35	M24	-	166	123,8	150	58,7	4275
420	627CFS410S	3	90,5	73	90	55	30	55	M30	-	208	152,4	178	71,4	4337